



# FRANCOIS MORELLET IN DIALOGUE

ART THE HAGUE | 04-08 October 2023

THE  
MILLEN  
HOUSE

# François Morellet in dialogue with art and design

The Millen House is excited to announce its participation in the prestigious art fair Art The Hague, where it will showcase a captivating combination of post-war art and contemporary design. The work of French artist François Morellet was the inspiration to create a booth with a focus on structure, anti- structure and the influence of change.

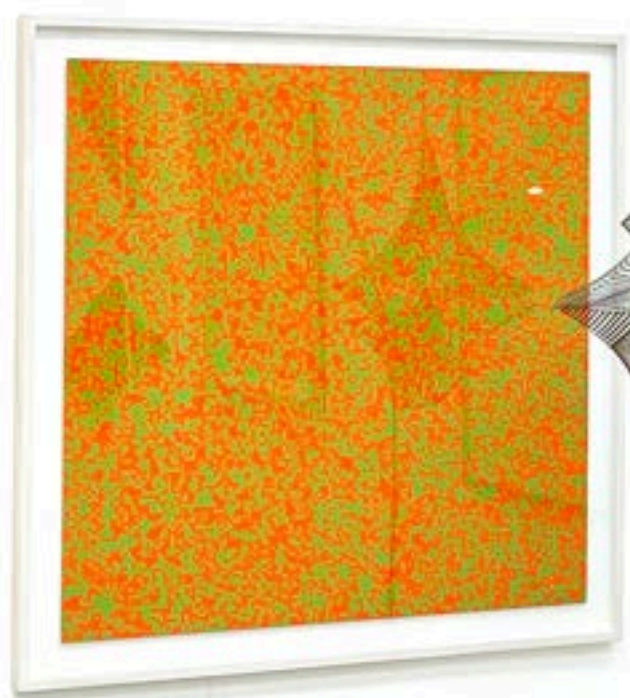
On view are pieces by François Morellet, Marleen Kaptein, Ella Koopman, Carel Balth and Françoise van den Bosch.

## FOCUS ON MORELLET

François Morellet (1926 – 2016) was a French contemporary abstract painter, sculptor, and light artist. His early work prefigured minimal art and conceptual art and he played a prominent role in the development of geometrical abstract art and post-conceptual art. Morellet developed a radical approach to geometric abstraction during a career spanning more than six decades. His object-based paintings, neon and architectural installations, and site-specific works explored the creative potential of kinetic and pre-established systems, challenging the viewer's understanding of perception and the physical picture plane. Working primarily with basic geometric forms, Morellet was committed to a methodology of rigorous objectivity and personal detachment. Incorporating steel, neon tubes, iron, adhesive tape, wire mesh and wood into his work, he strove to dismantle traditional hierarchies and embraced the elements of randomness and chance creating works based on random numbers found in his local phone directory or the infinite sequence of the number pi. As Morellet stated, he turned his artistic endeavors into 'an adventure, as frivolous as it is systematic.'

source: [francois-morellet.fr](http://francois-morellet.fr)

For more information about The Millen House, our participation in the Art The Hague or a gallery visit, please send us an e-mail: [hello@themillenhouse.com](mailto:hello@themillenhouse.com) or follow us on instagram.



**FRANCOIS MORELLET**  
(1926-2016)

**Répartition aléatoire de 40000  
carrés selon les chiffres pairs et  
impairs dun annuaire de  
téléphone | 1971**  
50% jaune 50% blanc

zeefdruk  
screenprint, series of 8

Gesigneerd & genummerd  
Signed & numbered

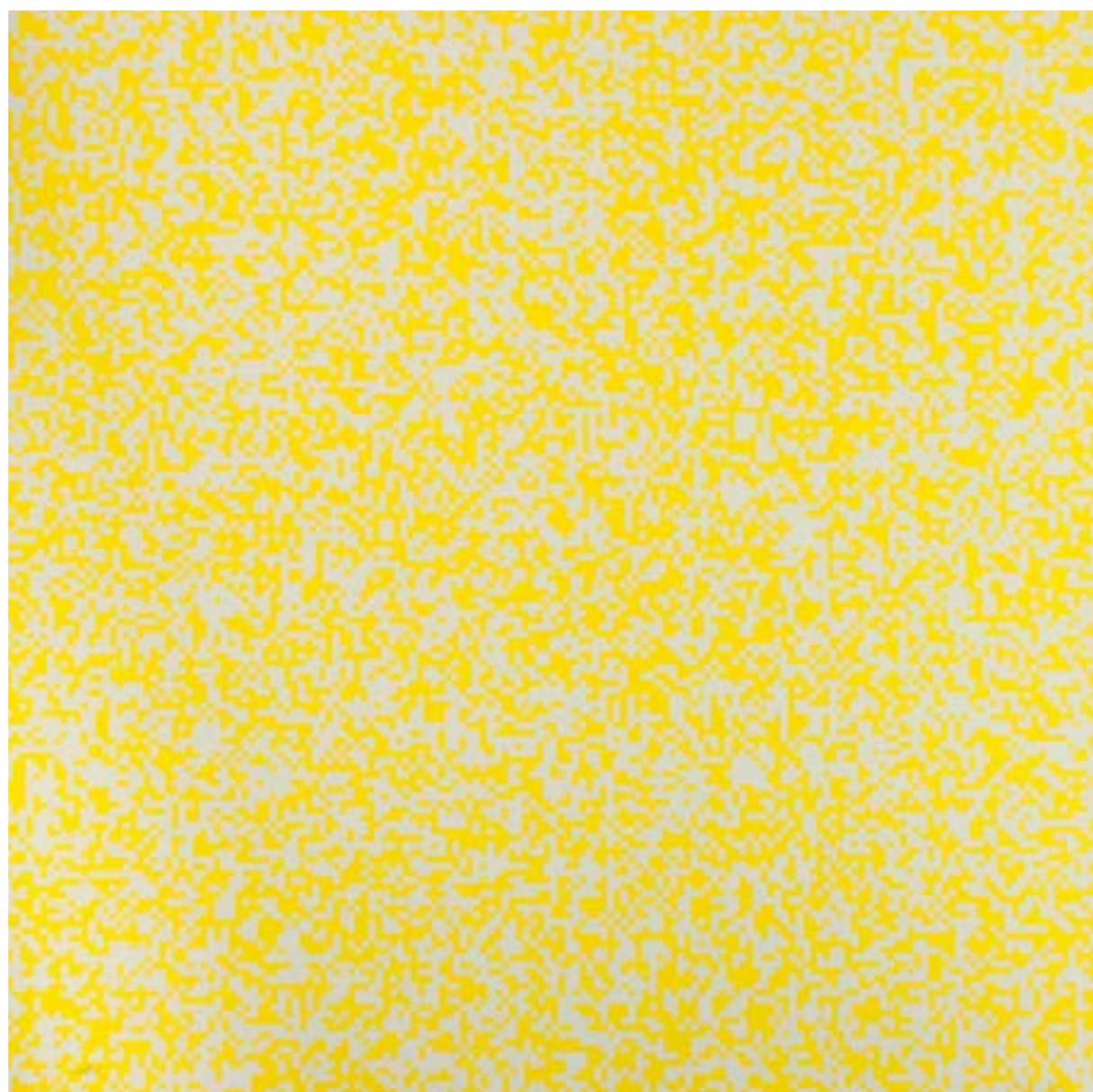
Edition of 300

Edition Galerie Denise René

80 x 80 cm

**€2450**





**FRANCOIS MORELLET**  
(1926-2016)

**Répartition aléatoire de 40000  
carrés selon les chiffres pairs et  
impairs dun annuaire de  
téléphone | 1971**  
50% noir 50% blue

zeefdruk  
screenprint, series of 8

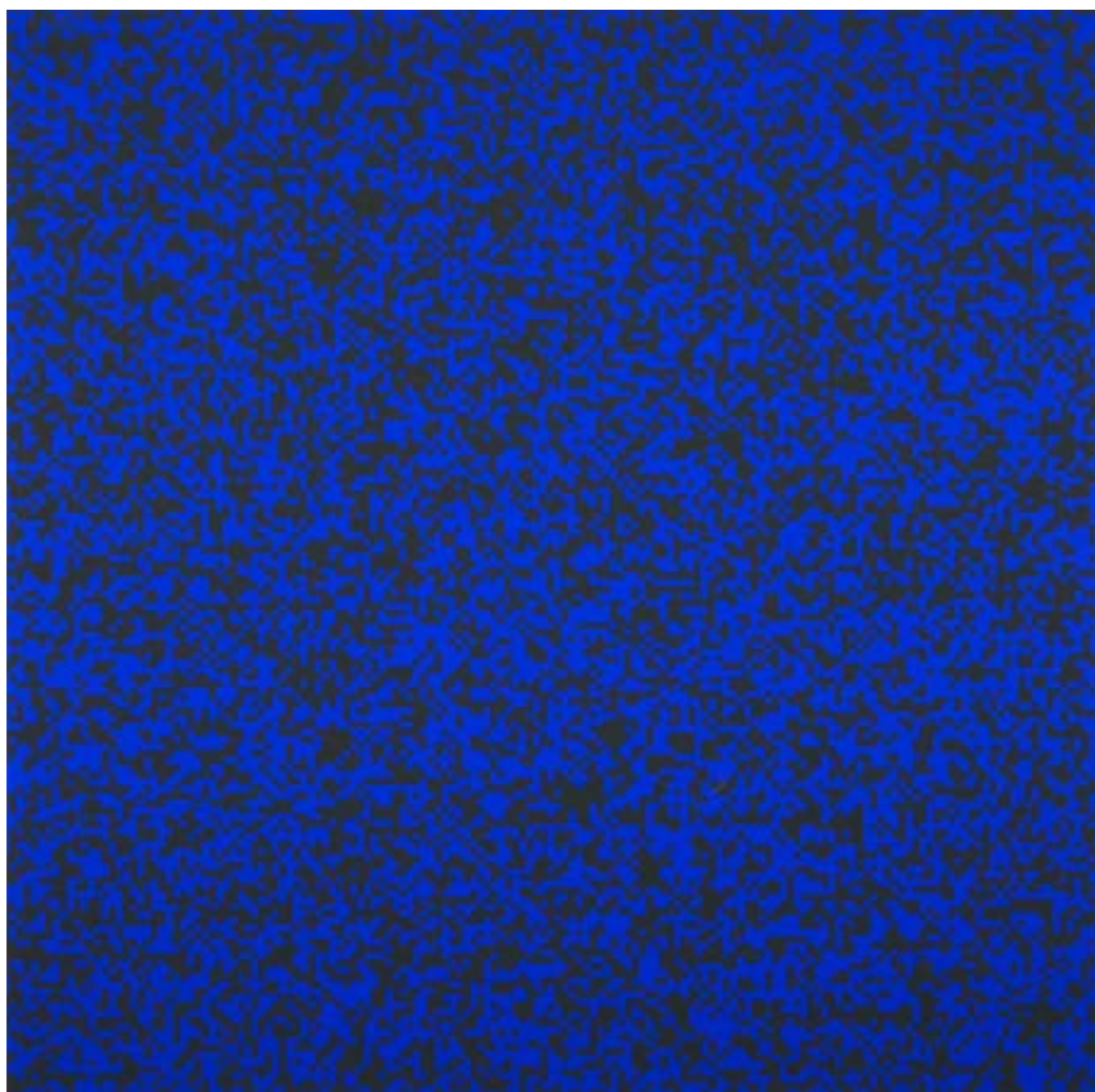
Gesigneerd & genummerd  
Signed & numbered

Edition of 300

Edition Galerie Denise René

80 x 80 cm

**€2450**



**FRANCOIS MORELLET**  
(1926-2016)

**Répartition aléatoire de 40000  
carrés selon les chiffres pairs et  
impairs dun annuaire de  
téléphone | 1971**

50% vert 50% orange

zeefdruk  
screenprint, series of 8

Gesigneerd & genummerd  
Signed & numbered

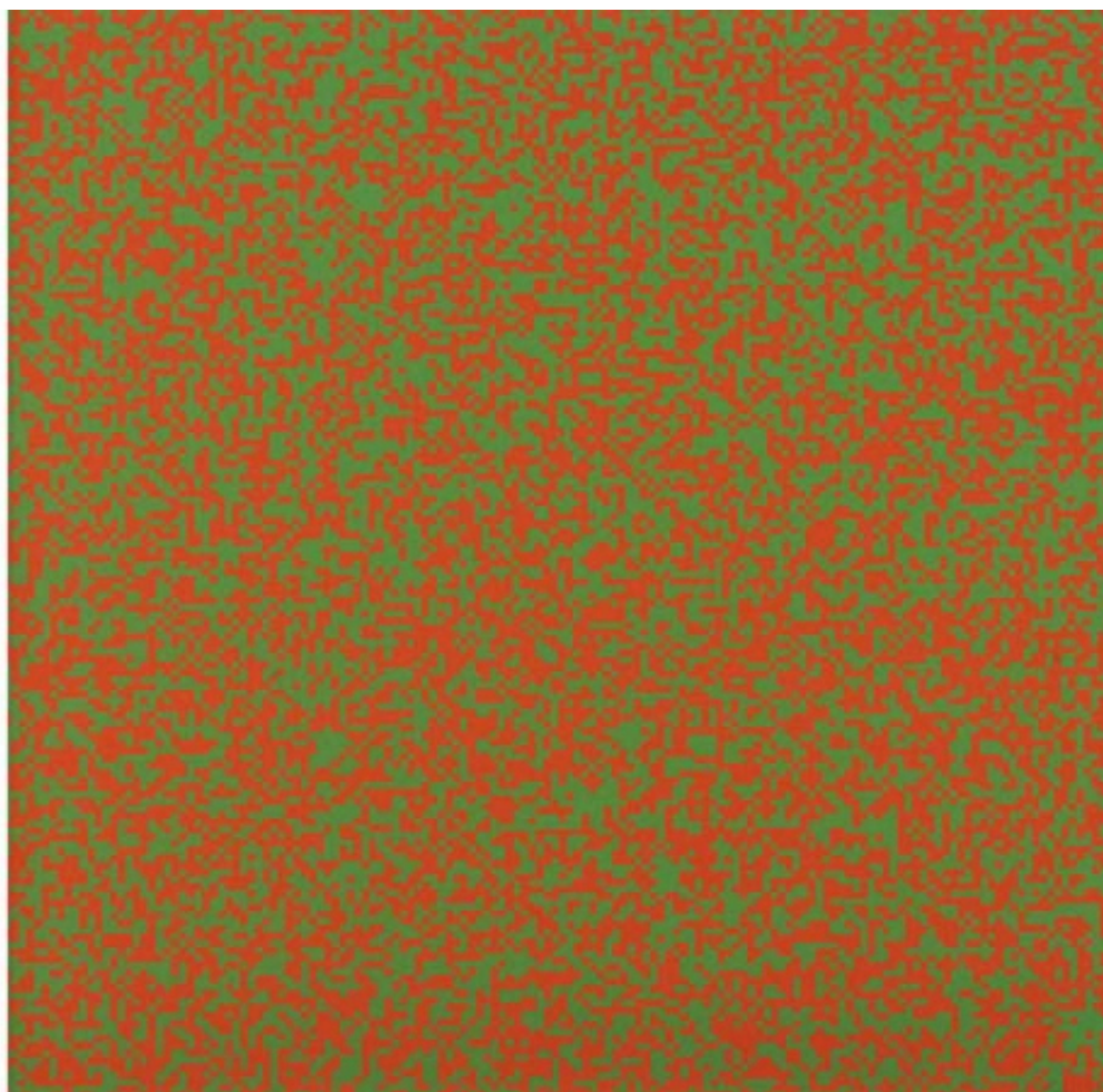
Edition of 300

Edition Galerie Denise René

80 x 80 cm

**€2450**









## ELLA KOOPMAN (1945)

### Zonder titel | ca. 1985

Untitled

Beschilderd canvas, geplisseerd  
Handpainted canvas, pleated

Gesigneerd verso  
Signed verso

50 x 20 cm

**P.O.A.**

Dutch textile artist Ella Koopman has built a long career experimenting with the possibilities of fabric, textile and colour. In this example she works with the effects of pleating by hand and colors, painting directly on the natural linen, resulting in an optical illusions of movement. In the 1980's and 1990's Koopman was at the forefront of Dutch textile design. Her fabrics were used for site specific installations in private and commercial settings like the cruise ships of the Holland America Line, and in fashion by leading Dutch designers Frans Molenaar, Mart Visser, Jan Janssen and international designers Jean Charles de Castelbajac & Louis Feraud. In 1996 the Kunstmuseum The Hague dedicated an exhibition to Koopman and the use of her fabrics by designers in fashion and art. Her work can be found in numerous private and museum collections such as the Kunstmuseum Den Haag. In 2006 Textiel Museum Tilburg acquired a piece from the same collection as the one presented here.



**ELLA KOOPMAN** (1945)

**Zonder titel | ca. 1985**

Untitled

Beschilderd canvas, geplisseerd  
Handpainted canvas, pleated

Gesigneerd verso  
Signed verso

50 x 20 cm

**P.O.A.**







**MARLEEN KAPTEIN**

**Parallax Floorlight | 2022**

Koolstofvezel en led-verlichting  
Carbon Fibre and Led lights

Gesigneerd  
Signed

Uniek exemplaar  
Unique piece

Uitvoering eigen atelier

290 x 30 cm

**€10750**





**MARLEEN KAPTEIN**

**Parallax IV Pendant | 2022**

Koolstofvezel en led-verlichting  
Carbon Fibre and Led lights

Gesigneerd  
Signed

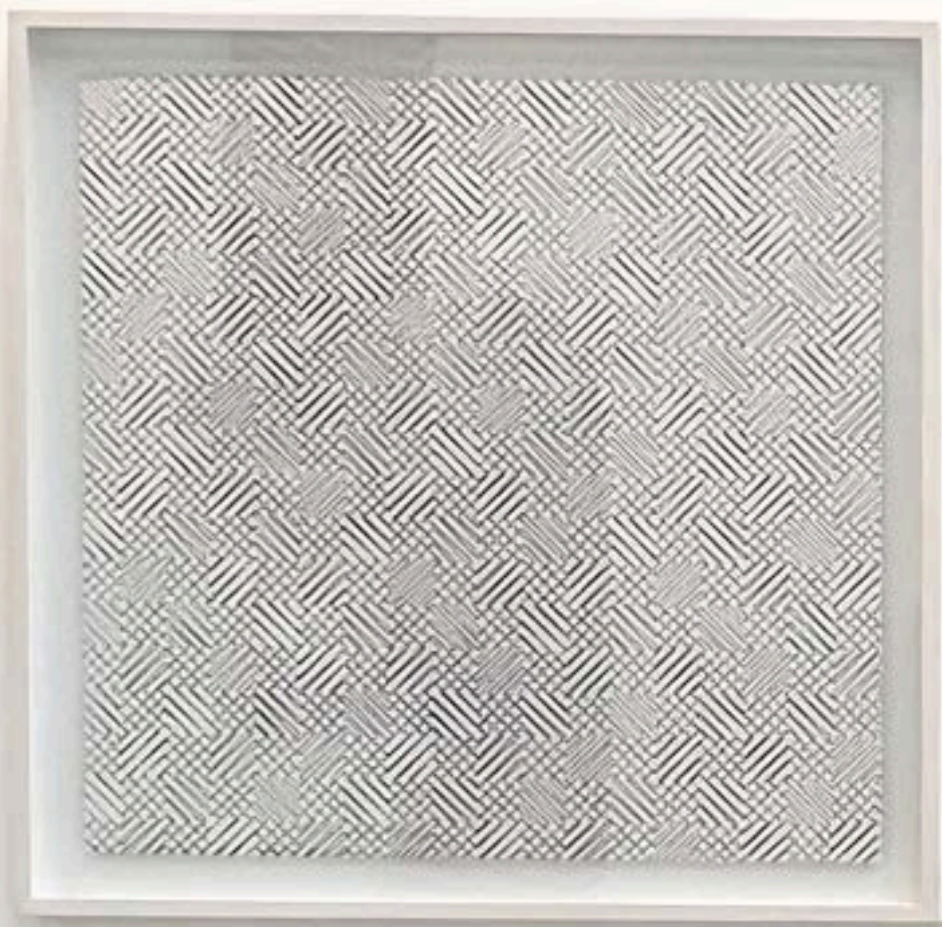
Uniek exemplaar  
Unique piece

Uitvoering eigen atelier

40 x 40 x 40 cm

**€6500**





**FRANCOIS MORELLET**  
(1926-2016)

**2 trames de chevrons-positif**  
**| 1960**

Zeefdruk op karton  
screenprint on cardboard

Niet gesigneerd  
Not signed

Galerie der Spiegel

62 x 62 cm

**€950**

**MARLEEN KAPTEIN**

**Parallax sculpture | 2022**

Koolstofvezel  
Carbon Fibre

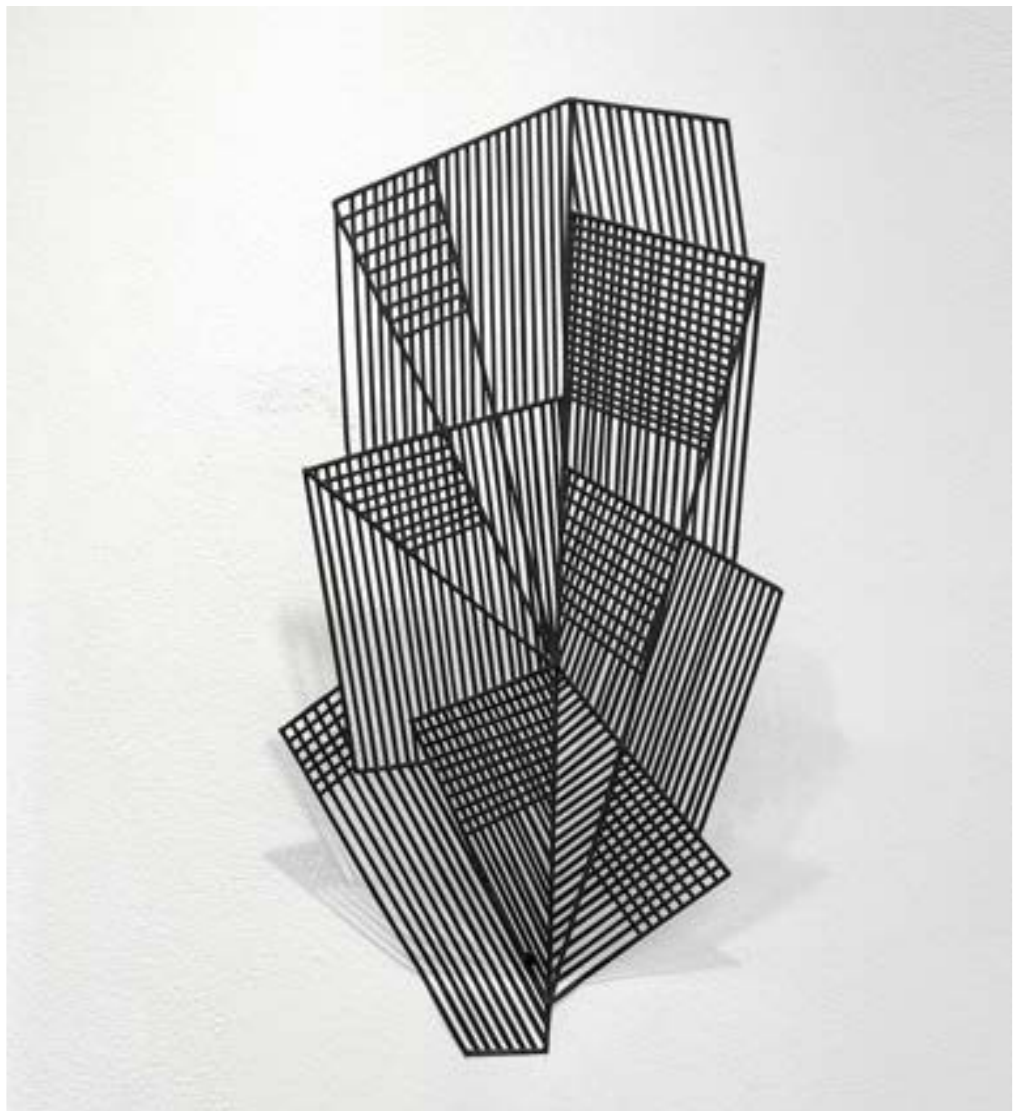
Gesigneerd  
Signed

Uniek exemplaar  
Unique piece

Uitvoering eigen atelier

60 x 40

**€2500**







**FRANCOIS MORELLET**  
(1926-2016)

**4 trames 0°-22°-5-45°-67°5**  
**| 1970**

zeefdruk  
screenprint

Gesigneerd & genummerd  
Signed & numbered

Edition of 100

Edition Halfmannshof, Gelsenkirchen, DE

40 x 40 cm

€1250



**FRANCOISE VAN DEN  
BOSCH (1944-1977)**

**Zonder titel | circa 1974**  
Untitled

Aluminium, tweedelig  
Aluminium, two-part

Niet gesigneerd  
Not signed

Uniek exemplaar  
Unique piece

Uitvoering eigen atelier

**€1750**

**FRANCOISE VAN DEN  
BOSCH (1944-1977)**

**Zonder titel | circa 1976**  
Untitled

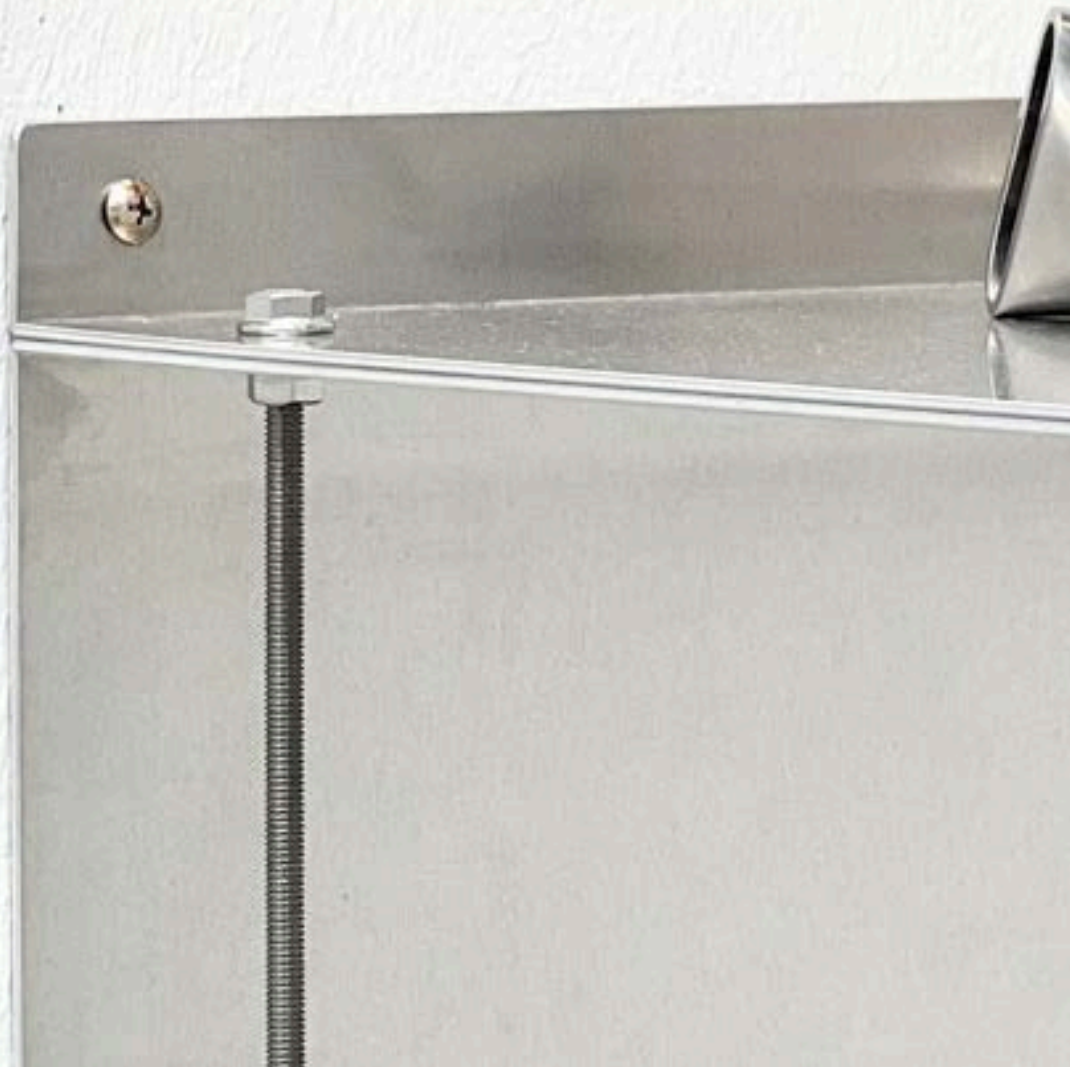
Aluminium, driedelig  
Aluminium, three-part

Niet gesigneerd  
Not signed

Uniek exemplaar  
Unique piece

Uitvoering eigen atelier

**€2250**









**FRANCOIS MORELLET**  
(1926-2016)

**Geometree | 1983**

Foto en inkt op papier  
photography and ink on paper

Gesigneerd & genummerd  
Signed & numbered

Edition of 22

Éditions Média, Neuchâtel, Switzerland

64 x 50 cm

€1550

**MARLEEN KAPTEIN**

**Parallax III Chandelier | 2022**

Koolstofvezel en led-verlichting  
Carbon Fibre and Led lights

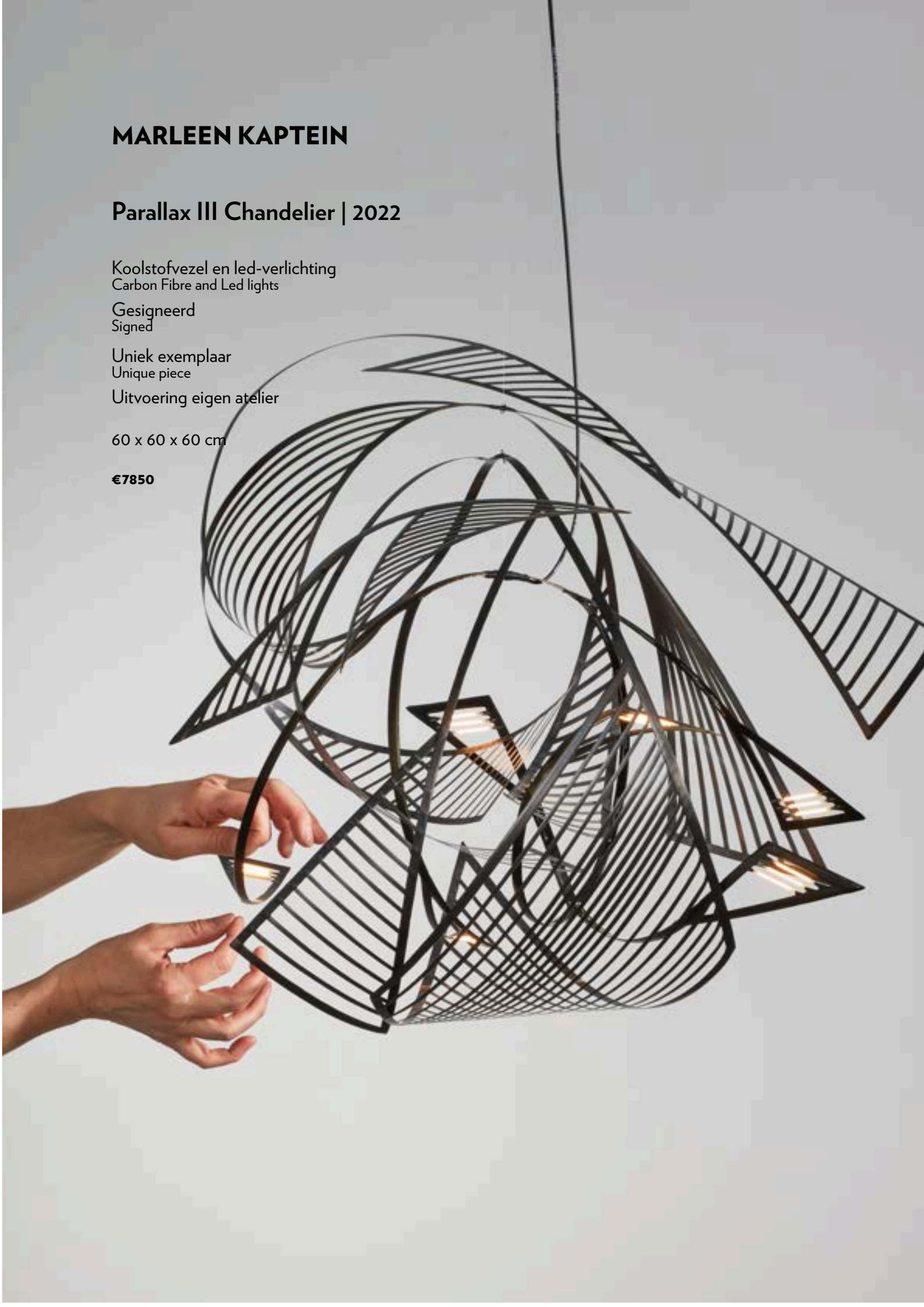
Gesigneerd  
Signed

Uniek exemplaar  
Unique piece

Uitvoering eigen atelier

60 x 60 x 60 cm

**€7850**







**CAREL BALTH**  
(1939-2019)

**Zonder titel | 1972**

Untitled

plexiglas  
plexiglass

Gesigineerd & genummerd  
Signed & numbered

Edition 7 / 12

103 x 4,6 x 4,6 cm

€2250

Born in Rotterdam, Balth's work is characterized by the innovative use of new media, where a synthesis of light, motion and space occupies a central position and where new means of perception are investigated. Balth uses a wide array of tools to get to the core of human perception and consistently utilises unconventional means and materials, from vinyl to Plexiglas to deliberately pixilated images. Balth has made many different kinds of works in his career, but his hallmark is exploring the intersections between abstract photography, painting and new media. Important influences in his work are Mondriaan and Lucio Fontana. His work can be found in numerous museums including Stedelijk Museum, Kunstmuseum Den Haag, Museum of Modern Art, NY, Centre Georges Pompidou, Kröller-Müller Museum, Groninger Museum, Museum Voorlinden.

**FRANCOIS MORELLET**  
(1926-2016)

**Zwei Interferenz Schnitte**  
**| 1977**

Multiplex met ritmische inkeping  
Wood with rhythmic incisions,

Gesigneerd en genummerd op sticker  
Signed and numbered on label

Edition of 30

70 x 14 x 7 cm

Editie Meissner, Hamburg

€7250





**FRANCOIS MORELLET**  
**(1926-2016)**

**Zonder titel | 1975**  
Untitled

zeefdruk  
screenprint

Gesigneerd & genummerd  
Signed & numbered

Edition of 100

Symposium Gorinchem, the Netherlands

70 x 50 cm

**€1250**





# FRANCOIS MORELLET IN DIALOGUE

ART THE HAGUE | 04-08 October 2023

THE  
MILLEN  
HOUSE